



## LUXSOL

**NEW**





**LUXSOL** is THE solution for in-ground safety lighting in covered car parks. It meets the requirements of French standards concerning safety lighting in car parks and safety luminaires. **LUXSOL** is the second product, after PCCE, to receive the HQ Energy mark.

### → For operators, a luminaire capable of meeting any challenge...

-  – Comfort and resistance: an ultra-flat profile (just 13,5 mm above ground) that cars can drive over without any risk of damage, and which pedestrians won't trip over.
-  – No more ripped-out light units, thanks to its rounded shape and its two load-spreading screws, and no problems when a vehicle drives over it.
-  – The use of LED technology removes the need for any sort of relamping operations, thanks to the exceptionally long life of the LED. It also means fewer faults, and therefore less car-park downtime and an optimum use of the installation.
-  – An HQ Energy product: the HQ Energy mark is given to products whose functions have been completely overhauled in order to reduce their overall energy consumption.
-  – Colours that signal security: available in green and white.



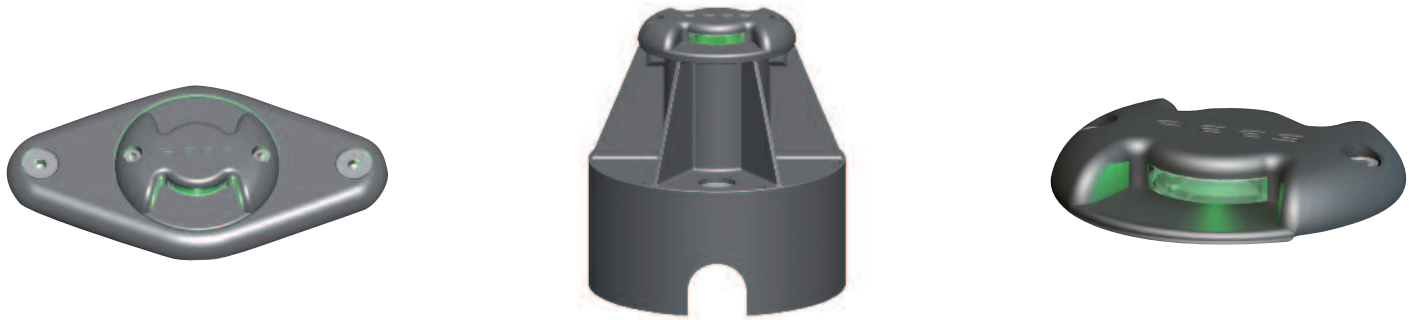
### → For installers, a complete product...

-  – Integral wiring connections, supplied with an unpluggable connector for two cables. No distribution box, which means less costly cable to be laid!
-  – A single product for an all-voltage power supply (48 V to 230 V (nominal), AC and DC).
-  – The lowest power consumption on the market: at less than 1 watt per unit, you can reduce the size of your central battery system!
-  – Simple and practical: power supply and connections integrated into the product.

**No relamping, less risk of damaging units, a lower electricity bill...**

**Choosing LUXSOL for your car park safety lighting means choosing performance, peace of mind and energy efficiency.**

# LUXSOL



## → Product range

Code	Désignation	Colour	Power supply voltage	Consumption
6 995 066	LUXSOL NF	White	48Vdc to 230Vac	0,75 to 0,95W
6 995 166	LUXSOL VERT	Green		

## → Accessories

Code	Désignation
6 011 309	LUXSOL Accessory Plate: for spacing out installation screws in road surfaces above ground level. Centre-to-centre distance: 180 mm
6 009 612	LUXSOL flush mount tube: designed to accommodate the electrical sheathing inserted into the deep-level road surface. Height: 150 mm

## → Specifications

- Class II, IP67 product
- Integrated wiring connections – delivered with 2 cable glands
- Connector with earth continuity (NF C15-100), allowing unplugging without disruption to the power supply
- Widened flush device box suitable for fire-resistant cables with load-spreading ribbing
- Dimensions: diameter: 95 mm; above-ground height: 13,5 mm

## → Standards

LUXSOL is the only product on the market to meet all the following requirements:

- Complies with Article PS22 of the French safety regulations for car parks.
- Certified compliant with NF 60598-2-22 (safety lighting). Reference 6 995 066 with NF AEAS mark.
- Certified compliant with NF 60598-2-13 (in-ground luminaires).
- Complies with EMC directive no. 2004/108/EC – NF EN 61547 / NF EN 61000-3-2 / NF EN 55015.
- Complies with low-voltage directive no. 2006/95/EC – NF EN 60598-2-22.
- Bears the HQ Energy mark.



## → Why choose an HQ Energy product?



HQ Energy means reliability, improved output, significant reductions in energy loss, and products that are easy to dismantle and recycle.

These criteria ensure that you benefit from savings on your energy bills throughout the lifetime of your product that far exceed the initial outlay!



Experts lighting your projects  
www.eclairage-secureite.com

259 - allée Jacques Monod – 69792 Saint Priest Cedex – France  
Tél : (33) 04 72 47 63 77 – Fax : (33) 04 78 40 13 94 – E-mail : aeas@aeas.fr

